



The Next Generation eFoil from Waydoo

# FLYER EVO

Effortless Start, Infinite Journeys



# Waydoo Flyer EVO eFoil

Introducing the Waydoo Flyer EVO eFoil, the latest triumph from Waydoo, a pioneering company at the forefront of water sports innovation. Building upon the success of its predecessor, the Flyer ONE, the Waydoo Flyer EVO takes hydrofoil technology to new heights. With an impressive track record of delivering high-quality and groundbreaking products, Waydoo has established itself as a leading force in the industry.

Now, the Waydoo Flyer EVO continues this legacy, offering a blend of cutting-edge design and adaptability. We listened to our pro riders, testers, and the community to bring best-of-class features and performance refinement to our next generation of products. Tailored for various skill levels, The EVO comes in different sizes and colors, providing extended ride time with dual battery options. Packed with smart features and crafted from premium materials, this eFoil ensures a powerful and quiet performance, redefining aquatic experiences. Versatile in function, it seamlessly transforms for different water activities. With its innovative battery design and modular construction, the Waydoo Flyer EVO sets a new standard in personalized hydrofoil adventures. Embark on a journey where Waydoo's commitment to excellence and innovation merges seamlessly with your aquatic pursuits.







# EVO Pro

The EVO Pro is ideal for riders willing to invest in their skills. Its board volume and other performance parameters give riders more room for maneuvering, making it perfect for continuous improvement.



**100min<sup>1</sup>**

Max. Runtime



**22.4mph<sup>1</sup>**

Max. Speed



**≤90kg**

Ideal Rider Weight



**4000W**

Max. Motor Output



**1800Wh**

Battery Capacity



**3.5h<sup>2</sup>**

Charging Time

## Specifications

<b>Board</b>	Pro 90L	<b>Stabilizer Wing</b>	Gliding Tail 320
<b>Battery</b>	Powerflight Battery 18	<b>Stabilizer Wing Extension</b>	Equipped
<b>Propulsion Unit</b>	Propulsion Unit Standard	<b>Charger</b>	Powerflight Charger
<b>Mast</b>	69cm (27") Aluminum Alloy Mast	<b>Remote</b>	Equipped
<b>Hydrofoil Wing</b>	Glider G1500		

\*1. Real-life data may vary depending on the eFoil configuration, rider skill level, and water conditions. The test was done without a propeller guard. For safety reasons, we strongly advise using a propeller guard during operation.

\*2. The battery charging and operating time may vary based on the battery and charger model. For faster charging, please select the powerflight inverter charger, charging can be completed in 1.8 hours.





# FLYER EVO

Modular Design, Effortless Customization.







## Board

The Flyer EVO's boards (Plus series) integrate multiple sensors and GPS, enabling Flight Assistance System for an enhanced eFoiling experience. The board's nose incorporates a handle, expansion dock, and plaque. The handle improves comfort during a prone position. The expansion dock allows for mounting various accessories, enriching your eFoiling experience. The plaque can be used to affix registration or personalized labels (ensure these do not contain metal to avoid signal interference). The board's tail includes pre-installed mounting holes for the Mover towing wheels or other custom equipment. Boards like the Max Plus and Pro/Pro Plus are made from EPP, reducing impact risks and ensuring safety and ease of maintenance. For those prioritizing lightweight and style, choose the Master Plus board, which is crafted from premium Kevlar.



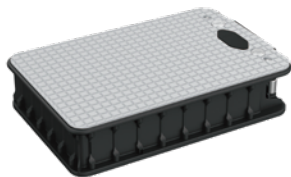
<b>Model</b>	Max Plus 130L	Pro/Pro Plus 90L	Master Plus 75L
<b>Color</b>	Surging Gray	Cerulean Blue	Onyx Black/ Dawn
<b>Material</b>	EPP	EPP	Kevlar
<b>Weight</b>	13.6kg	9.8/10.6kg	10.5kg
<b>Sensors</b>	Equipped	Not Equipped /Equipped	Equipped
<b>GPS</b>	Equipped	Not Equipped /Equipped	Equipped
<b>Dimensions (L×W×H)</b>	1770×750×155mm	1540×670×150mm	1440×620×150mm



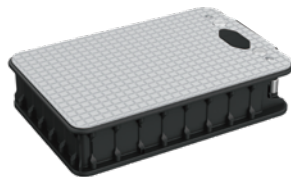


# Powerflight Batteries

The Flyer EVO offers two battery options: a 1800Wh and a larger 2300Wh capacity, made with high-quality lithium-ion cells encased in robust aluminum alloy. The lighter 1800Wh battery provides agility on the water, while the 2300Wh option offers extended run time. Both batteries feature an LCD monitor for real-time status updates, are IP68 waterproof, and include leak-detection alerts for added reliability. With reverse charging capability, they can serve as power sources when paired with the inverter charger. Optical signal transmission ensures stable communication.



Powerflight Battery 18 (36Ah)



Powerflight Battery 23 (45Ah)

## Specifications

### Powerflight Battery 18

Battery Type	Lithium-ion
Waterproof Rating	IP68
Capacity	1800Wh
Weight	15.7kg
Max. Voltage	58.4V
Rated Voltage	50.4V
Dimensions (L×W×H)	435×288×91mm

### Powerflight Battery 23

Battery Type	Lithium-ion
Waterproof Rating	IP68
Capacity	2300Wh
Weight	17.5kg
Max. Voltage	58.4V
Rated Voltage	50.4V
Dimensions (L×W×H)	435×288×91mm





# Propulsion Units



## Propulsion Unit Standard

- Motor Output: 4000W
- Material: Aluminium Alloy (Die Cast)
- Dimensions (L×W×H): 610×167×199mm



## Propulsion Unit Performance

- Motor Output: 6000W
- Material: Aluminium Alloy (Die Cast)
- Dimensions (L×W×H): 675×167×199mm



## Propulsion Unit Elite

- Motor Output: 6000W
- Material: Aluminium Alloy (CNC)
- Dimensions (L×W×H): 665×167×199mm

The Flyer EVO's propulsion unit delivers powerful output and operates quietly, allowing you to fully enjoy the sounds of nature while flying over the water without being disturbed by the noise of the motor. The propulsion unit is available in three versions: Standard, Performance, and Elite. The Standard version has an output power of 4000W, paired with the Glider G1500/C1500, and a maximum takeoff weight of 90kg. Both the Performance and Elite versions have an output power of 6000W, paired with the Glider G1500/C1500, and a maximum takeoff weight of 130kg. The Elite version is specially designed to pair with the Master Plus board, offering a more streamlined design, higher strength, and more stable power output, providing an exceptional flying experience.





# Masts



## 27" Mast

Suitable for novice riders seeking stability and ease of control.

- Weight: 3.6kg
- Mast Height (H): 690mm
- Material: Aluminium Alloy
- Dimensions (LxWxH): 690x246x104mm



## 31" Mast Carbon

Full carbon fiber construction for minimal weight and smooth carving, providing riders with the most nimble eFoiling experience.

- Weight: 2.7kg
- Mast Height (H): 790mm
- Material: Carbon Fiber
- Dimensions (LxWxH): 790x246x104mm



## 35" Mast

Suitable for seasoned riders seeking higher maneuverability and flight height.

- Weight: 4.1kg
- Mast Height (H): 890mm
- Material: Aluminium Alloy
- Dimensions (LxWxH): 890x246x104mm

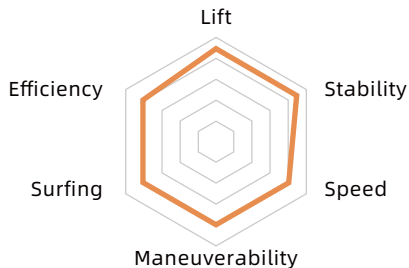
The EVO's mast features built-in multicolor LED lights that you can customize with the remote control. Choose from various modes and colors to create a stunning visual experience. Shine bright and make a statement on the water as the ultimate trendsetter!





# Wings

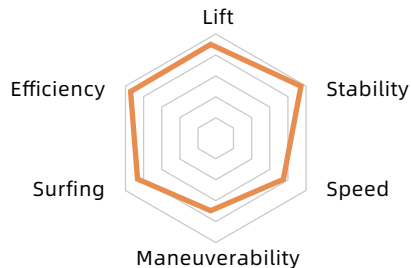
## Voyager G1500/C1500



- **Material:** Carbon Fiber/Fiberglass
- **Area:** 1642cm<sup>2</sup>
- **Span:** 76.5cm
- **Aspect Ratio:** 4.2
- **Weight:** 1.5kg/1.7kg

Slow speed and high stability, suitable for beginner riders practicing carving and wave-riding techniques in calm waters and small waves.

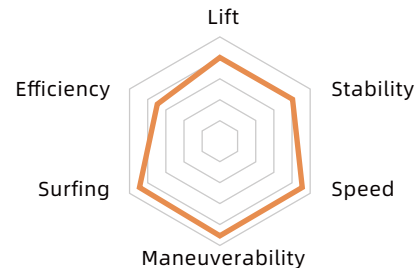
## Glider G1500/C1500



- **Material:** Carbon Fiber/Fiberglass
- **Area:** 1440cm<sup>2</sup>
- **Span:** 92cm
- **Aspect Ratio:** 5.8
- **Weight:** 1.5kg/1.7kg

The area is close to the Voyager 1500, with lower resistance to further boost flight efficiency. Carefully designed dihedral ensures stability in straight flight and better turn controllability, which is ideal for long-distance eFoiling.

## Voyager G1100/C1100



- **Material:** Carbon Fiber/Fiberglass
- **Area:** 1099cm<sup>2</sup>
- **Span:** 63.8cm
- **Aspect Ratio:** 4.1
- **Weight:** 1.1kg/1.3kg

Compact in size, suitable for advanced riders. Offers high maneuverability and sufficient stability, with enhanced linear flight and responsive turning feedback.



# Stabilizer Wing

## Gliding Tail 320



- **Material:** PA6 + Fiberglass
- **Area:** 320cm<sup>2</sup>
- **Span:** 39cm
- **Aspect Ratio:** 4.7
- **Weight:** 0.2kg

The wing profile has been upgraded to a more efficient NACA profile. Upturned wingtips enhance lateral stability, with reduced installation angles ensuring a more comfortable stance when turning on waves.

## Surfing Tail 322



- **Material:** Carbon Fiber
- **Area:** 320cm<sup>2</sup>
- **Span:** 39cm
- **Aspect Ratio:** 4.7
- **Weight:** 0.3kg

The upgraded carbon fiber version of the Tail 320, known for its extreme rigidity, provides superior control and greater stability.









# Mover

The Mover, a versatile set of wheels compatible with 130L and 90L boards. Designed with fat and durable wheels, it's perfect for navigating sandy and rough terrain, making transporting your Flyer EVO effortless.



Mover-S



Mover-L

## Specifications

---

### Mover-S

<b>Weight</b>	1.6kg
<b>Material</b>	Aluminium Alloy
<b>Dimensions (D×H)</b>	φ178×745mm
<b>Mounting Hole Spacing</b>	140mm
<b>Applicable Board</b>	Pro/Pro Plus 90L

### Mover-L

<b>Weight</b>	1.8kg
<b>Material</b>	Aluminium Alloy
<b>Dimensions (D×H)</b>	φ178×869mm
<b>Mounting Hole Spacing</b>	140mm
<b>Applicable Board</b>	Max Plus 130L

# Powerflight Charger / Powerflight Inverter Charger

The Waydoo Flyer EVO offers two chargers with different power capacities. The 600W charger is lightweight and portable, ensuring convenience for on-the-go charging. Meanwhile, the 1500W inverter charger, when paired with the Powerflight battery, serves as a power source for other devices. Notably, it allows users to customize AC output voltage and frequency, providing flexibility in power management.



Powerflight Charger

## Specifications

Input Voltage	100~240V AC
Input Frequency	47~63Hz
Max. Output Voltage	58.8V
Max. Input Power	800W
Max. Output Power	588W
Max. Charging Current	10A
Dimensions (L×W×H)	237×104×58mm
Weight	1.8kg



Powerflight Inverter Charger

## Specifications

	Charging	Inverter
Input Voltage	90~264V AC	40~59V DC
Input Frequency	47~63Hz	50~60Hz
Max. Output Voltage	58.8V DC	240V AC
Max. Continuous Output Power	1500W	1500W
Max. Instantaneous Output Power	/	2600W@2S
Max. Charging Current	30A	
Dimensions (L×W×H)	266×141×44mm	
Weight	3.9kg	

### Adaptive inverter output:

When paired with a Powerflight battery, the high-performance inverter charger can invert and adaptively output corresponding AC voltage and frequency based on different standard AC sockets.



# Remote

The EVO remote features a new, intuitive user interface that offers richer information and simplifies control settings. It includes both day and night modes for clear and comfortable viewing anytime. Quick Bluetooth pairing enables easy switching between multiple EVO eFoils. To avoid accidental battery drain, you can set an auto shut-off time in case you forget to turn off the eFoil. With 150% more pull length, the upgraded trigger enhances throttle control for precise handling. A larger battery capacity provides extended use. The silicone-padded wrist strap ensures a comfortable and secure fit, reducing slippage. Additionally, it includes an alloy key for convenient battery locking and unlocking. An integrated magnetic key in the remote handle ensures smooth eFoil battery control.



Remote

## Specifications

Trigger Pull Length	21mm
Runtime	11h
Charging Time	2h (5V/2A Charger)
Charging Method	Magnetic USB Charging Cable
Transmission Method	BLE
Waterproof Rating	IP68
Dimensions (L×W×H)	153×59×118mm



# Propulsion Options

The standard propeller, featuring a high-efficiency propeller, a shroud, and a protective cover, meets diverse user needs effectively. The folding propeller excels in efficiency and power, particularly suitable for agile maneuvers in wave-rich areas, especially with a smaller board and longer mast. Meanwhile, the jet drive option prioritizes safety and smooth power delivery, making it an excellent choice for beginners due to its stability and steady water exit.



Jet Drive



Folding Propeller

## Specifications

---

Weight	1.1kg
Material	Aluminium Alloy
Dimensions (D×H)	φ114×173mm

## Specifications

---

Weight	0.3kg
Material	Aluminium Alloy
Dimensions (D×H)	φ140×65mm



## Scooter Kit

Transform your eFoiling experience with the EVO Scooter Kit, which introduces a scooter form to your 130L and 90L boards. This kit comes with a handlebar that easily attaches to the board's nose, providing exceptional stability and control.



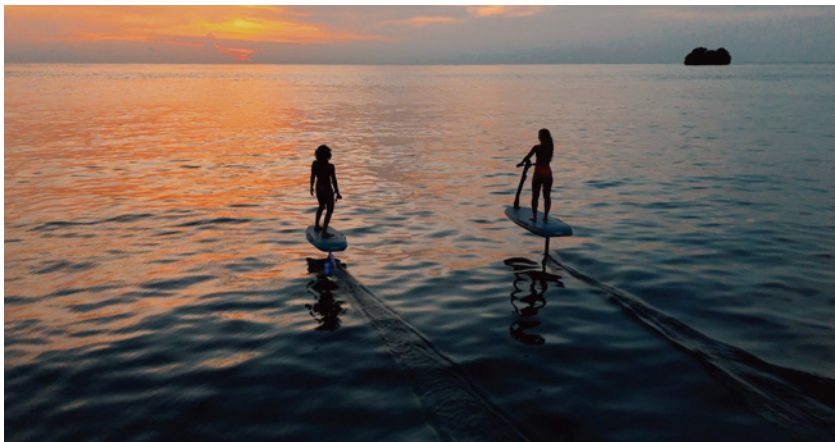
Scooter Kit

## Outboard Kit

Though not a new concept, Waydoo sets itself apart by offering the EVO Outboard Kit, allowing the conversion of the Powerflight battery and propulsion unit into a functional outboard motor. This capability extends the Waydoo Flyer EVO's utility, enabling it to propel small watercraft for a diverse range of aquatic activities.



Outboard Kit





The Next Generation eFoil from Waydoo

# FLYER EVO



**Shenzhen Waydoo Intelligence Technology Co., Ltd.**

[www.waydootech.com](http://www.waydootech.com)

For Dealership Inquiries: [sales@waydootech.com](mailto:sales@waydootech.com)



@Waydoo\_Official



@waydoo\_tech



@waydoo\_tech



@Waydoo